



**Shikshan Prasarak Mandal's  
GOPAL KRISHNA GOKHALE COLLEGE,  
KOLHAPUR.**

'B' Ward, Subhash Road, Kolhapur Pin- 416 012. P. Box. No.-3

Phone No- (0231) 2642540 /2642340

NAAC Accredited "B" (C.G.P.A. 2.48) 3<sup>rd</sup> Cycle



E-Mail:- gkgcollege1950@gmail.com

g260.cl@unishivaji.ac.in

Web Site:- www.gkgcollege.edu.in

U-DISE - 27341304307

**Vice Prin. Shri. N.T.Patil  
M. A. M.Ed.**

**I/c Prin. Dr. R. B. Bhuyekar  
M.A., M. Phil., Ph.D.(Hindi)**

Ref. No.GKG/ /2023-24

Date -

**Feedback Process of the Institution:**

**Classified as follows:**

**Feedback Analysis**




  
**Principal**  
Gopal Krishna Gokhale College  
Kolhapur.

## **FEEDBACK ANALYSIS**

- 1. STUDENTS FEEDBACK ANALYSIS**
- 2. TEACHERS FEEDBACK ANALYSIS**
- 3. ALUMNI FEEDBACK ANALYSIS**
- 4. EMPLOYER FEEDBACK ANALYSIS**
- 5. PARENT FEEDBACK ANALYSIS**



  
**Principal**  
**Gopal Krishna Gokhale College**  
**Kolhapur.**

SHIKSHAN PRASARAK MANDAL'S

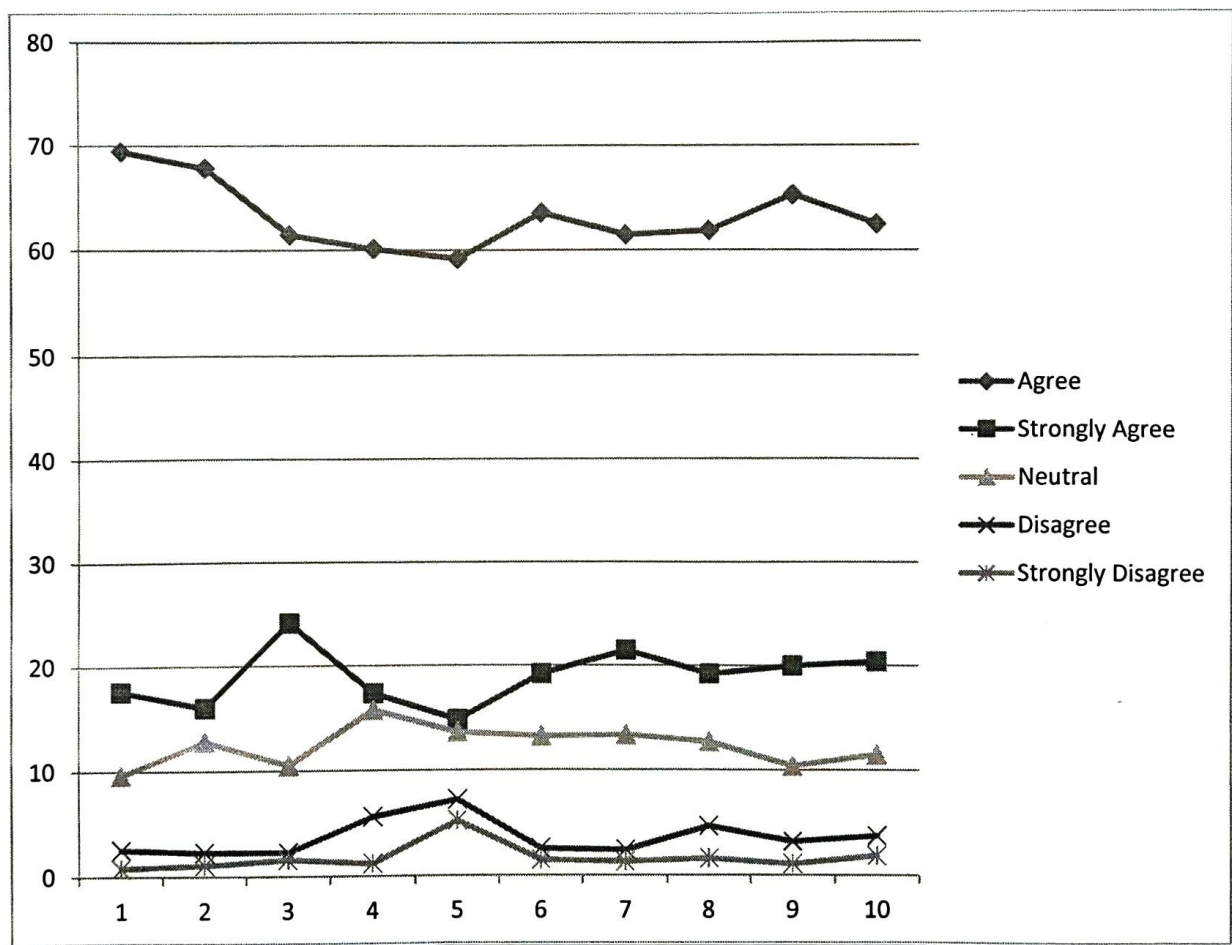
GOPAL KRISHNA GOKHALE COLLEGE, KOLHAPUR

### Students Feedback Analysis

Point No.	Curriculum Evaluation Points	Response in Percentage				
		Agree	Strongly Agree	Neutral	Disagree	Strongly Disagree
1.	Covers important concepts and theories of the subject.	69.47	17.60	9.60	2.53	0.80
2.	Provides information on contemporary trends and issues related to my subject.	67.86	16	12.80	2.27	1.07
3.	Potential to lay the foundation for higher education.	61.47	24.13	10.53	2.27	1.60
4.	Scope for the use of innovative teaching methods and experiential learning. (Group discussions, Field visits, Use of audio-visual aids etc.)	60.14	17.33	15.73	5.60	1.20
5.	Useful for fostering employability and entrepreneurship skills.	59.20	14.80	13.60	7.20	5.20
6.	Adequate knowledge of various human values (environment, gender equality etc.) and human skills.	63.60	19.20	13.20	2.53	1.47
7.	Book/reading materials are adequately available in the library.	61.47	21.46	13.33	2.40	1.33
8.	Infrastructure facilities (e.g. Classrooms, lab-equipment, reading rooms etc.) are adequately available.	61.87	19.20	12.67	4.67	1.60
9.	Useful for the personality development of the students.	65.33	20	10.40	3.20	1.07
10.	Developed my interest in subject area.	62.53	20.40	11.47	3.73	1.87



  
**Principal**  
Gopal Krishna Gokhale College  
Kolhapur.



  
**Principal**  
 Gopal Krishna Gokhale College  
 Kolhapur.

SHIKSHAN PRASARAK MANDAL'S

GOPAL KRISHNA GOKHALE COLLEGE, KOLHAPUR

### Teachers Feedback Analysis

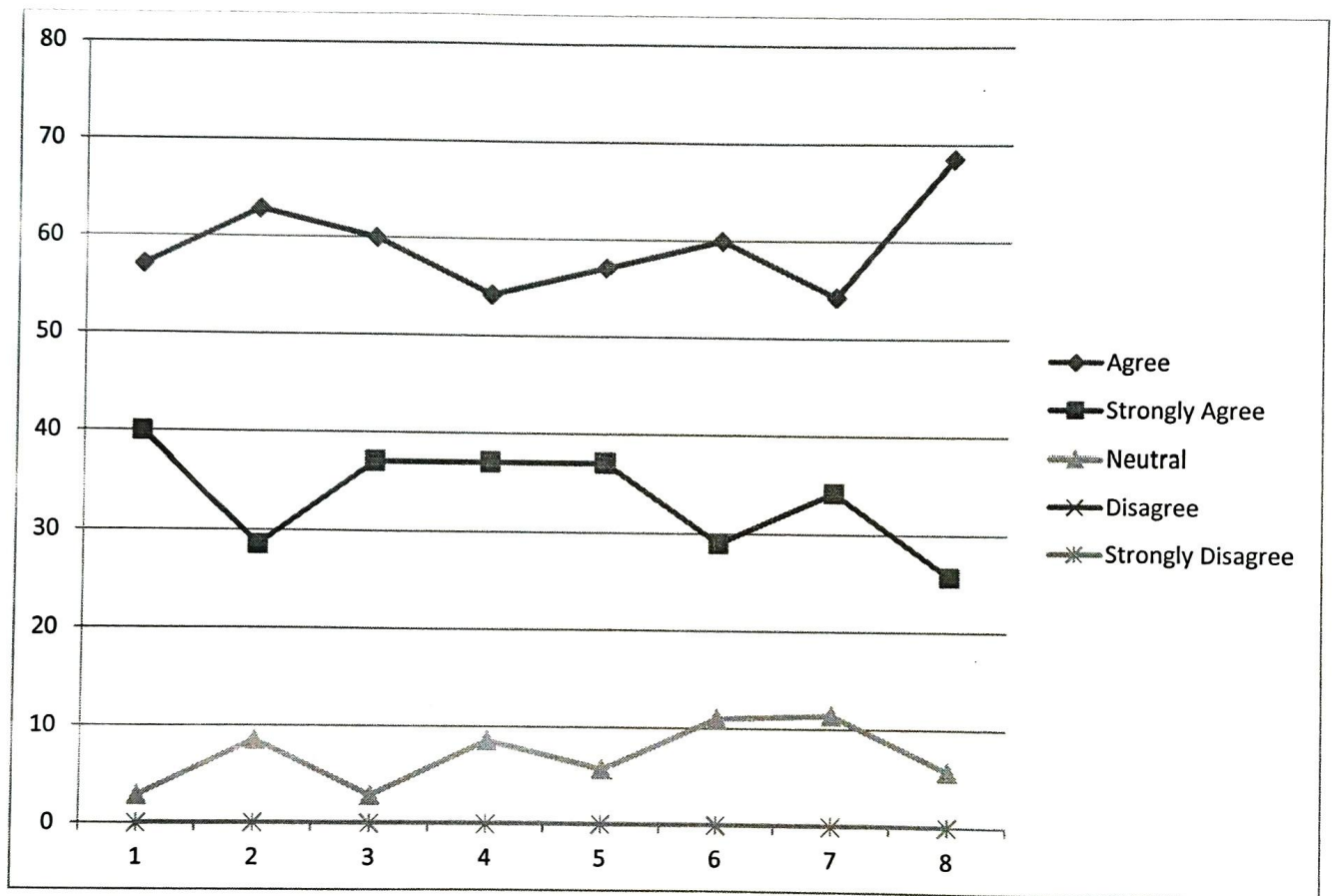
Point No.	Curriculum Evaluation Points	Response in Percentage				
		Agree	Strongly Agree	Neutral	Disagree	Strongly Disagree
1.	Syllabus is suitable to the course	57.14	40	2.86	0	0
2.	Syllabus is need based	62.86	28.57	8.57	0	0
3.	The depth of the course content is adequate to have significant learning outcomes	60	37.14	2.86	0	0
4.	Syllabus is sufficient to bridge the gap between industry standards /current global scenarios and academics	54.28	37.14	8.58	0	0
5.	The timely coverage of syllabus is possible in the mentioned number of hours	57.14	37.14	5.72	0	0
6.	The recommended textbooks are adequate and map onto the syllabus	60	29	11	0	0
7.	The academic flexibility embedded in the curriculum provides opportunities to students to pursue topics of their own interest	54.28	34.30	11.42	0	0
8.	The course/syllabus has good balance between theory and Lab (if applicable)	68.57	25.72	5.71	0	0



**Principal**

Gopal Krishna Gokhale College  
Kolhapur.





  
**Principal**  
**Gopal Krishna Gokhale College**  
**Kolhapur.**

SHIKSHAN PRASARAK MANDAL'S

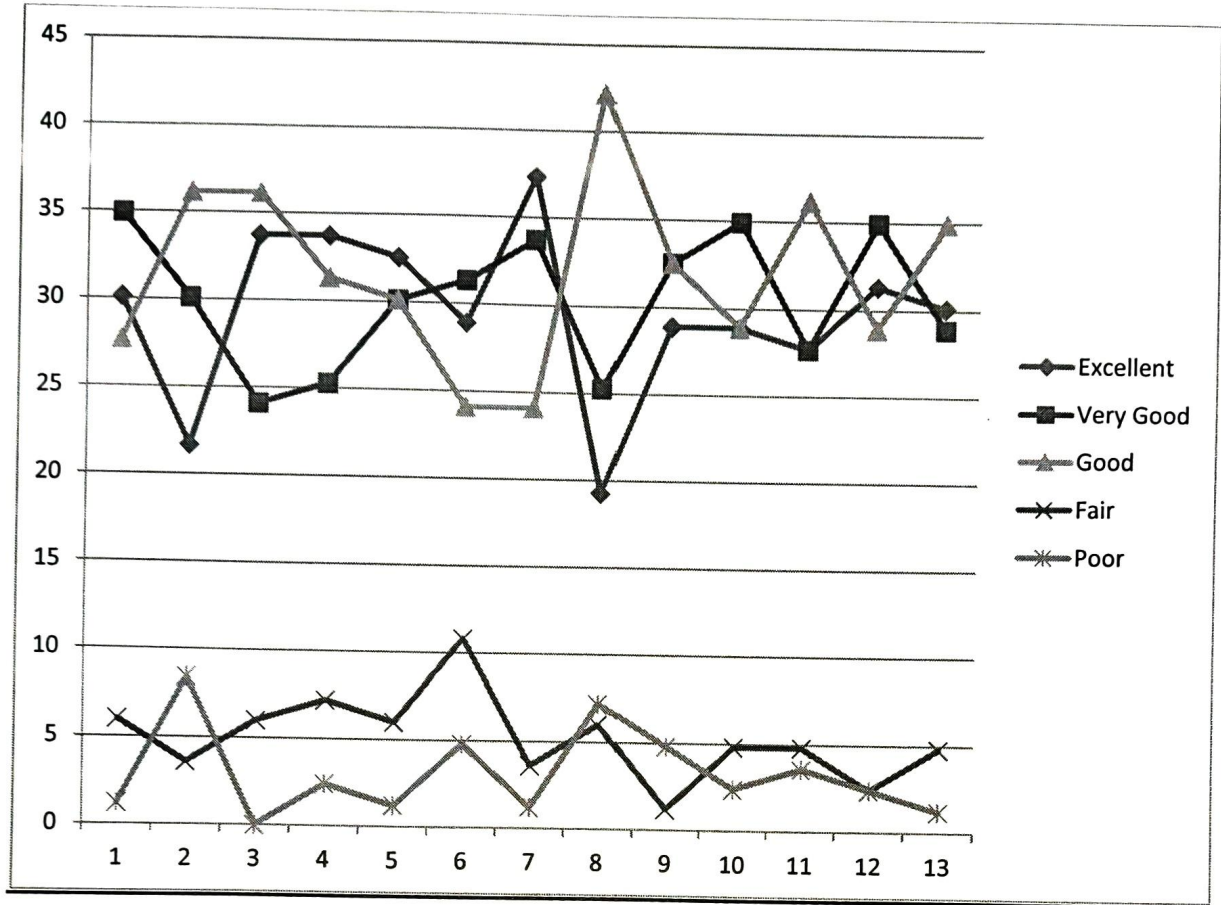
GOPAL KRISHNA GOKHALE COLLEGE, KOLHAPUR

### Alumni Feedback Analysis

Point No.	Curriculum Evaluation Points	Response in Percentage				
		Excellent	Very Good	Good	Fair	Poor
1.	Admission procedure	30.12	34.94	27.72	6.02	1.20
2.	Fee structure	21.69	30.12	36.14	3.61	8.44
3.	Infrastructure & lab Facilities	33.73	24.10	36.14	6.03	0
4.	Faculty	33.73	25.30	31.33	7.23	2.41
5.	Quality of support material	32.54	30.12	30.12	6.02	1.20
6.	Placement	28.92	31.33	24.10	10.84	4.81
7.	Library	37.35	33.73	24.10	3.62	1.20
8.	Canteen Facility	19.28	25.30	42.17	6.02	7.23
9.	Alumni Association/Network of Old Friends	28.92	32.53	32.53	1.20	4.82
10.	What is the caliber of students passing out of this institute	28.92	34.93	28.92	4.82	2.41
11.	How do you rate the course which are skill related suiting to the industry included into the programs ?	27.71	27.71	36.15	4.82	3.61
12.	How do you rate the learning experience in terms of their relevance to the real life application?	31.33	34.94	28.91	2.41	2.41
13.	How do you rate the courses that you have learnt in relations to your current job?	30.12	28.92	34.94	4.82	1.20



**Principal**  
Gopal Krishna Gokhale College  
Kolhapur.



  
**Principal**  
 Gopal Krishna Gokhale College  
 Kolhapur.



SHIKSHAN PRASARAK MANDAL'S

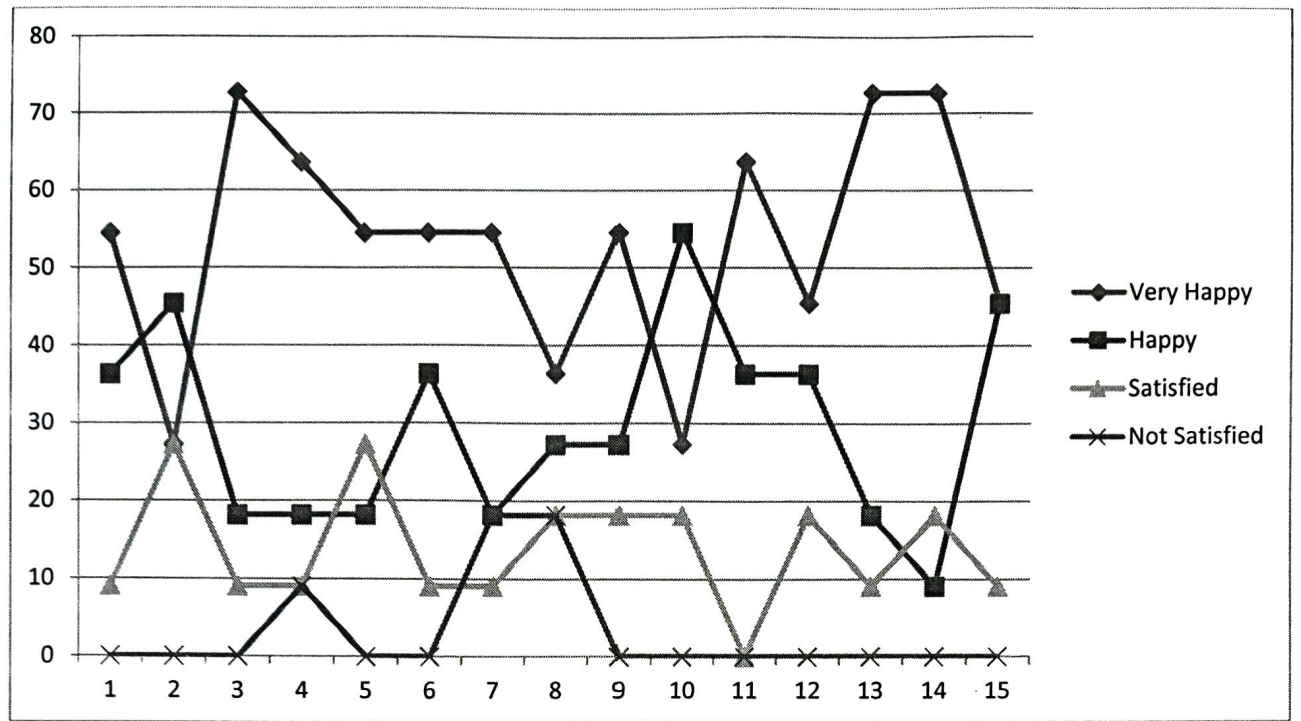
GOPAL KRISHNA GOKHALE COLLEGE, KOLHAPUR


### Employer Feedback Analysis

Point No.	Curriculum Evaluation Points	Response in Percentage			
		Very Happy	Happy	Satisfied	Not Satisfied
1.	General communication skills	54.55	36.36	9.09	0
2.	Developing practical solutions to work place problems	27.27	45.46	27.27	0
3.	Working as a part of a team	72.72	18.18	9.10	0
4.	Creative in response to workplace challenges	63.64	18.18	9.09	9.09
5.	Their planning and organization skills	54.55	18.18	27.27	0
6.	Self-motivated and taking on appropriate level of responsibility	54.55	36.36	9.09	0
7.	Open to new idea and learning new techniques	54.55	18.18	9.09	18.18
8.	Using technology and workplace equipment	36.37	27.27	18.18	18.18
9.	Ability to contribute to the goal of the organization	54.55	27.27	18.18	0
10.	Technical knowledge/skill	27.27	54.55	18.18	0
11.	Ability manage/leadership qualities	63.64	36.36	0	0
12.	Innovativeness, creativity	45.46	36.36	18.18	0
13.	Relationship with seniors/peers/subordinates	72.72	18.18	9.10	0
14.	Involvement in social activity	72.72	9.10	18.18	0
15.	Involvement in social activity	45.45	45.45	9.10	0



  
**Principal**  
Gopal Krishna Gokhale College  
Kolhapur.



  
**Principal**  
**Gopal Krishna Gokhale College**  
**Kolhapur.**

SHIKSHAN PRASARAK MANDAL'S

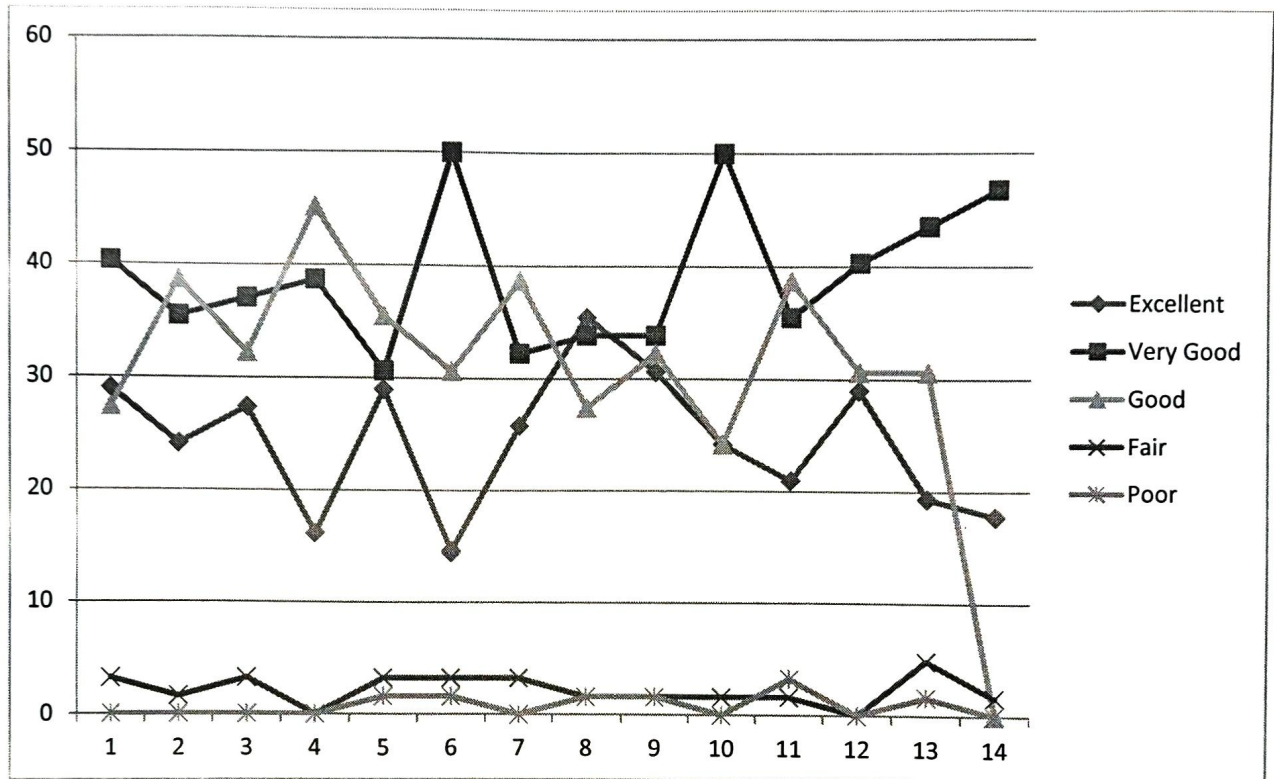
GOPAL KRISHNA GOKHALE COLLEGE, KOLHAPUR

### Parents Feedback Analysis

Point No.	Curriculum Evaluation Points	Response in Percentage				
		Excellent	Very Good	Good	Fair	Poor
1.	Admission Procedure	29.03	40.32	27.42	3.23	0
2.	Infrastructure and Lab Facility	24.19	35.49	38.71	1.61	0
3.	Work Culture observed by you and your Ward	27.42	37.10	32.25	3.23	0
4.	Canteen facility	16.13	38.71	45.16	0	0
5.	Library facility	29.03	30.65	35.48	3.23	1.61
6.	Other facilities provided by the college	14.52	50	30.64	3.23	1.61
7.	Sports and cultural activities	25.81	32.25	38.71	3.23	0
8.	Student's counselling and guidance	35.48	33.88	27.42	1.61	1.61
9.	Use of Information and communication technology in the college	30.65	33.87	32.26	1.61	1.61
10.	Academic Discipline (i.e timely conduct of lectures, practical and related activities) observed by the college	24.19	50	24.20	1.61	0
11.	Improvement in soft skills, knowledge, ethics, morality, observed by you in your ward while studying in college	20.97	35.48	38.71	1.61	3.23
12.	Examination system adopted by the college	29.03	40.32	30.65	0	0
13.	Evaluation and Feedback mechanism	19.35	43.55	30.65	4.84	1.61
14.	Placements	17.74	46.78	33..87	1.61	0



  
Principal  
Gopal Krishna Gokhale College  
Kolhapur.



  
**Principal**  
**Gopal Krishna Gokhale College**  
**Kolhapur.**



SHIKSHAN PRASARAK MANDAL'S


GOPAL KRISHNA GOKHALE COLLEGE, KOLHAPUR

## Students Feedback Analysis

### Departmental Feedback (Commerce)

Point No.	Curriculum Evaluation Points	Response in Percentage (382 Respondents)				
		Agree	Strongly Agree	Neutral	Disagree	Strongly Disagree
1.	Covers important concepts and theories of the subject.	69.63	16.75	10.21	2.62	0.79
2.	Provides information on contemporary trends and issues related to my subject.	69.11	13.87	13.87	2.36	0.79
3.	Potential to lay the foundation for higher education.	62.83	23.04	10.73	1.83	1.57
4.	Scope for the use of innovative teaching methods and experiential learning. (Group discussions, Field visits, Use of audio-visual aids etc.)	60.73	15.18	16.75	6.04	1.30
5.	Useful for fostering employability and entrepreneurship skills.	64.14	6.28	10.99	6.81	11.78
6.	Adequate knowledge of various human values (environment, gender equality etc.) and human skills.	65.97	18.06	13.09	1.83	1.05
7.	Book/reading materials are adequately available in the library.	63.35	18.33	13.61	2.88	1.83
8.	Infrastructure facilities (e.g. Classrooms, lab-equipment, reading rooms etc.) are adequately available.	65.70	17.28	11.26	4.19	1.57
9.	Useful for the personality development of the students.	67.54	19.37	9.69	2.88	0.52
10.	Developed my interest in subject area.	61.26	19.63	12.83	4.71	1.57



  
**Principal**  
Gopal Krishna Gokhale College  
Kolhapur



SHIKSHAN PRASARAK MANDAL'S


GOPAL KRISHNA GOKHALE COLLEGE, KOLHAPUR

## Departmental Feedback

### Teachers Feedback Analysis (Commerce)

Point No.	Curriculum Evaluation Points	Response in Percentage				
		Agree	Strongly Agree	Neutral	Disagree	Strongly Disagree
1.	Syllabus is suitable to the course	100	0	0	0	0
2.	Syllabus is need based	100	0	0	0	0
3.	The depth of the course content is adequate to have significant learning outcomes	0	100	0	0	0
4.	Syllabus is sufficient to bridge the gap between industry standards /current global scenarios and academics	0	100	0	0	0
5.	The timely coverage of syllabus is possible in the mentioned number of hours	100	0	0	0	0
6.	The recommended textbooks are adequate and map onto the syllabus	100	0	0	0	0
7.	The academic flexibility embedded in the curriculum provides opportunities to students to pursue topics of their own interest	100	0	0	0	0
8.	The course/syllabus has good balance between theory and Lab (if applicable)	0	100	0	0	0



  
Principal  
Gopal Krishna Gokhale College  
Kolhapur.

SHIKSHAN PRASARAK MANDAL'S

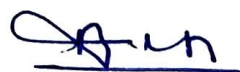
GOPAL KRISHNA GOKHALE COLLEGE, KOLHAPUR

## Departmental Feedback

### Parents Feedback Analysis (Commerce)

Point No.	Curriculum Evaluation Points	Response in Percentage				
		Excellent	Very Good	Good	Fair	Poor
1.	Admission Procedure	29.03	40.32	27.42	3.23	0
2.	Infrastructure and Lab Facility	24.19	35.49	38.71	1.61	0
3.	Work Culture observed by you and your Ward	27.42	37.10	32.25	3.23	0
4.	Canteen facility	16.13	38.71	45.16	0	0
5.	Library facility	29.03	30.65	35.48	3.23	1.61
6.	Other facilities provided by the college	14.52	50	30.64	3.23	1.61
7.	Sports and cultural activities	25.81	32.25	38.71	3.23	0
8.	Student's counselling and guidance	35.48	33.88	27.42	1.61	1.61
9.	Use of Information and communication technology in the college	30.65	33.87	32.26	1.61	1.61
10.	Academic Discipline (i.e timely conduct of lectures, practical and related activities) observed by the college	24.19	50	24.20	1.61	0
11.	Improvement in soft skills, knowledge, ethics, morality, observed by you in your ward while studying in college	20.97	35.48	38.71	1.61	3.23
12.	Examination system adopted by the college	29.03	40.32	30.65	0	0
13.	Evaluation and Feedback mechanism	19.35	43.55	30.65	4.84	1.61
14.	Placements	17.74	46.78	33.87	1.61	0



  
Principal  
Gopal Krishna Gokhale College  
Kolhapur.


SHIKSHAN PRASARAK MANDAL'S  
GOPAL KRISHNA GOKHALE COLLEGE, KOLHAPUR

Departmental Feedback

**Alumni Feedback Analysis (Commerce)**

Point No.	Curriculum Evaluation Points	Response in Percentage				
		Excellent	Very Good	Good	Fair	Poor
1.	Admission procedure	30.12	34.94	27.72	6.02	1.20
2.	Fee structure	21.69	30.12	36.14	3.61	8.44
3.	Infrastructure & lab Facilities	33.73	24.10	36.14	6.03	0
4.	Faculty	33.73	25.30	31.33	7.23	2.41
5.	Quality of support material	32.54	30.12	30.12	6.02	1.20
6.	Placement	28.92	31.33	24.10	10.84	4.81
7.	Library	37.35	33.73	24.10	3.62	1.20
8.	Canteen Facility	19.28	25.30	42.17	6.02	7.23
9.	Alumni Association/Network of Old Friends	28.92	32.53	32.53	1.20	4.82
10.	What is the caliber of students passing out of this institute	28.92	34.93	28.92	4.82	2.41
11.	How do you rate the course which are skill related suiting to the industry included into the programs ?	27.71	27.71	36.15	4.82	3.61
12.	How do you rate the learning experience in terms of their relevance to the real life application?	31.33	34.94	28.91	2.41	2.41
13.	How do you rate the courses that you have learnt in relations to your current job?	30.12	28.92	34.94	4.82	1.20



  
**Principal**  
Gopal Krishna Gokhale College  
Kolhapur.



SHIKSHAN PRASARAK MANDAL'S

GOPAL KRISHNA GOKHALE COLLEGE, KOLHAPUR

### Employer Feedback Analysis

Point No.	Curriculum Evaluation Points	Response in Percentage			
		Very Happy	Happy	Satisfied	Not Satisfied
1.	General communication skills	54.55	36.36	9.09	0
2.	Developing practical solutions to work place problems	27.27	45.46	27.27	0
3.	Working as a part of a team	72.72	18.18	9.10	0
4.	Creative in response to workplace challenges	63.64	18.18	9.09	9.09
5.	Their planning and organization skills	54.55	18.18	27.27	0
6.	Self-motivated and taking on appropriate level of responsibility	54.55	36.36	9.09	0
7.	Open to new idea and learning new techniques	54.55	18.18	9.09	18.18
8.	Using technology and workplace equipment	36.37	27.27	18.18	18.18
9.	Ability to contribute to the goal of the organization	54.55	27.27	18.18	0
10.	Technical knowledge/skill	27.27	54.55	18.18	0
11.	Ability manage/leadership qualities	63.64	36.36	0	0
12.	Innovativeness, creativity	45.46	36.36	18.18	0
13.	Relationship with seniors/peers/subordinates	72.72	18.18	9.10	0
14.	Involvement in social activity	72.72	9.10	18.18	0
15.	Involvement in social activity	45.45	45.45	9.10	0



  
Principal  
Gopal Krishna Gokhale College  
Kolhapur.